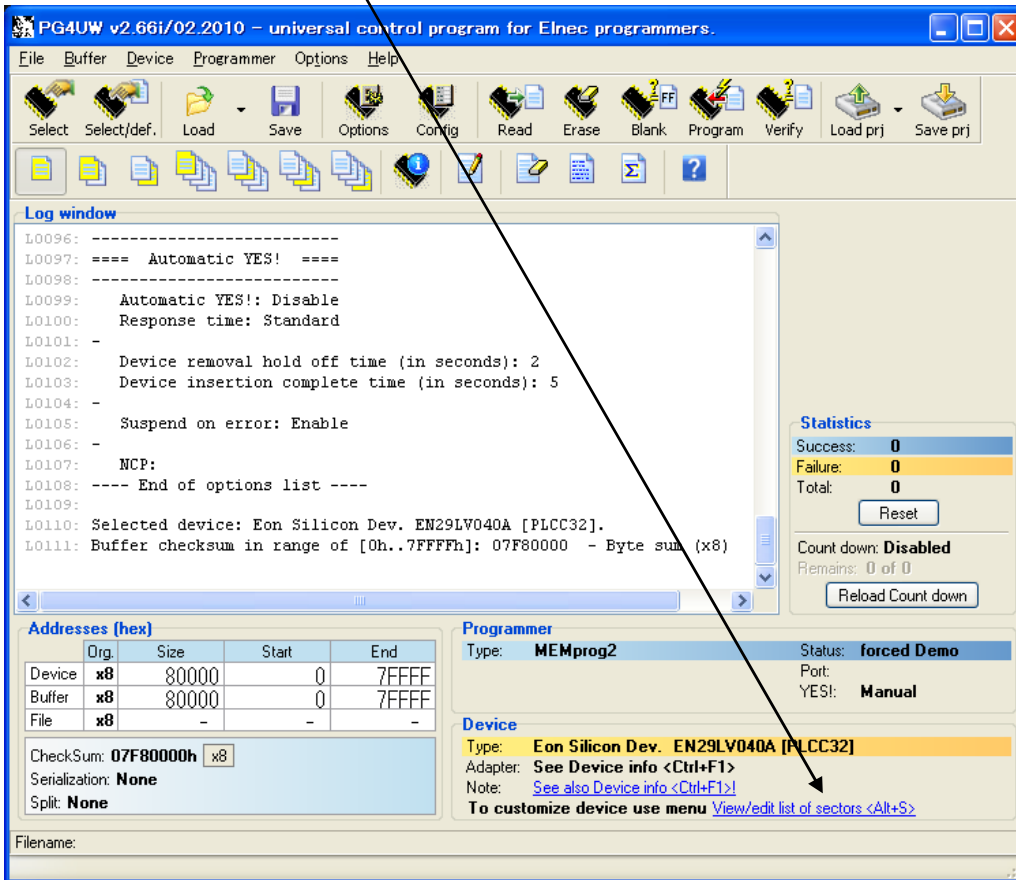
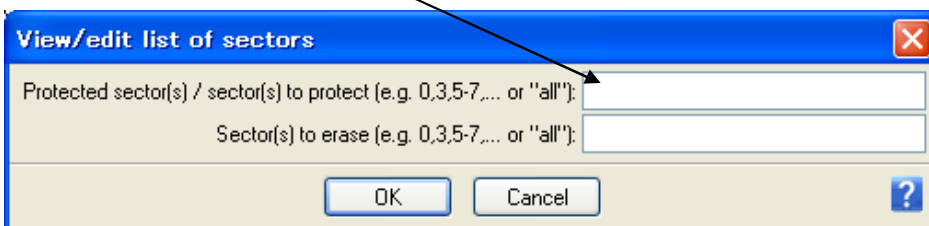


EN29LV040Aのプロテクトのかけ方  
以下のView/edit of sectorを押します。



プロテクトを掛けたいセクタを入力します。  
たとえば0-3と入力してOKを押します。



LOGウインドで以下の様にセクタプロテクトを掛ける状態に設定された事がわかります。

The screenshot shows the PG4UW v2.66i/02.2010 software interface. The Log window displays the following text:

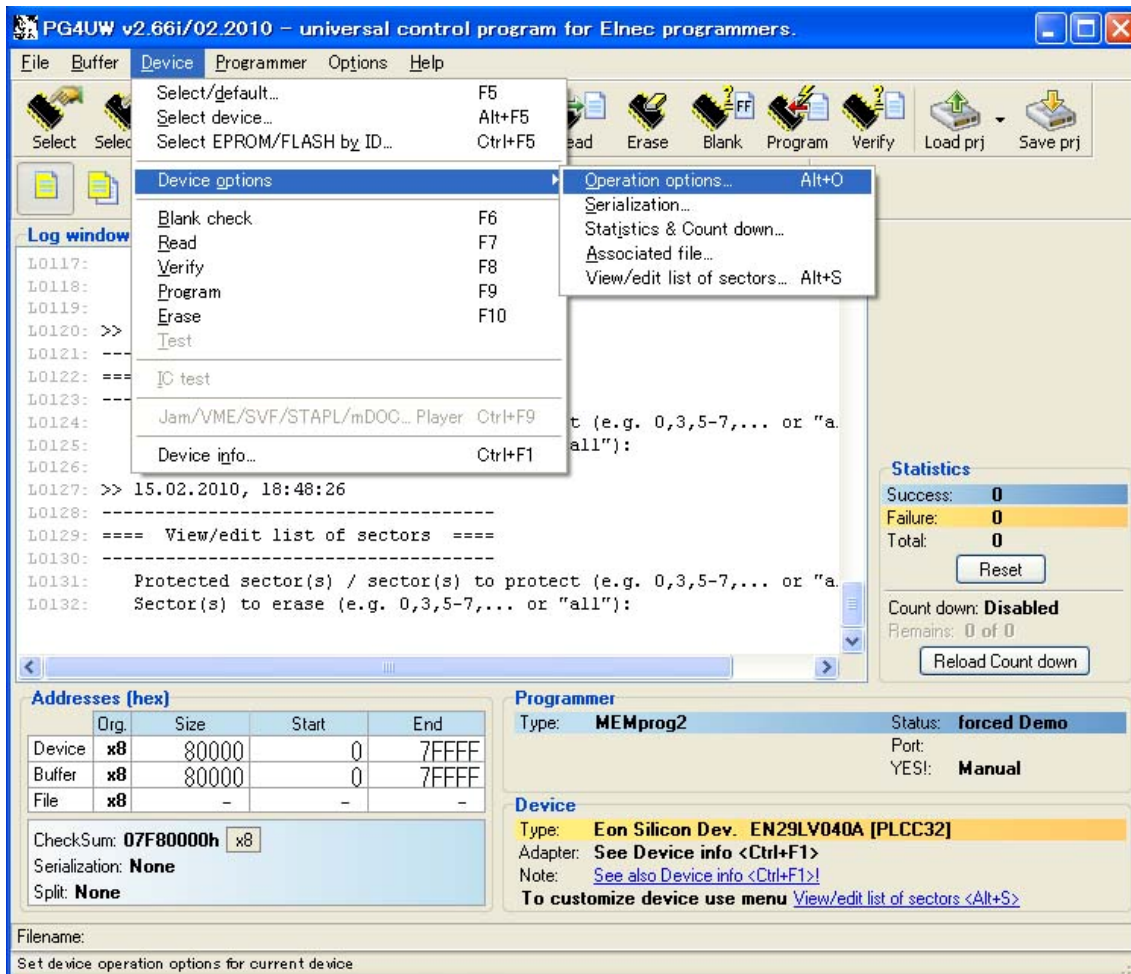
```
Device insertion complete time (in seconds): 5
Suspend on error: Enable
MCP:
--- End of options list ---
Selected device: Eon Silicon Dev. EN29LV040A [PLCC32].
Offer checksum in range of [0h..7FFFFh]: 07F80000 - Byte sum (x8)
> 15.02.2010, 18:41:02
-----
=== View/edit list of sectors ===
-----
Protected sector(s) / sector(s) to protect (e.g. 0,3,5-7,... or "all"): 0-3
Sector(s) to erase (e.g. 0,3,5-7,... or "all"):
```

The text "Protected sector(s) / sector(s) to protect (e.g. 0,3,5-7,... or "all"): 0-3" is circled in black. Below the log window, the "Addresses (hex)" table is visible:

	Org.	Size	Start	End
Device	x8	80000	0	7FFFF
Buffer	x8	80000	0	7FFFF
File	x8	-	-	-

Below the table, the CheckSum is 07F80000h x8, Serialization is None, and Split is None. The Programmer section shows Type: MEMprog2, Status: forced Demo, Port, YES!, and Manual. The Device section shows Type: Eon Silicon Dev. EN29LV040A [PLCC32], Adapter: See Device info <Ctrl+F1>, and Note: See also Device info <Ctrl+F1>. A link to "View/edit list of sectors <Alt+S>" is provided.

尚 Device Device options Operation optionsは以下の設定が必要です。



Selected sector(s) protect を設定する。

**Device operation options**

Addresses

Device start: 0000000000  
Device end: 000007FFFF  
Buffer start: 0000000000  
Split: None

Insertion test

Insertion test: Enable  
Device ID check error terminates the operation: Enable

Command execution

Erase before programming: Disable  
Blank check before programming: Disable  
Verify after reading: Enable  
Verify: Once  
Verify options: Not supported

Programming parameters

All sectors unprotect  
 Flash  
 Selected sector(s) protect

Erase parameters

All sectors  
 Selected sector(s)

OK Cancel ?